

The Viking Xtreme valve range is robust, versatile and combines high performance with compact installation dimensions. Large flow capacity, short change-over times and low change-over pressure are important characteristics of this valve range.

Ports

- P2LAX: 1/8 inch NPT & BSPP
- P2LBX: 1/4 inch NPT & BSPP
- P2LCX: 3/8 inch NPT & BSPP
- P2LDX: 1/2 inch & BSPP

Mounting

- Inline
- IEM aluminum bar

Solenoids

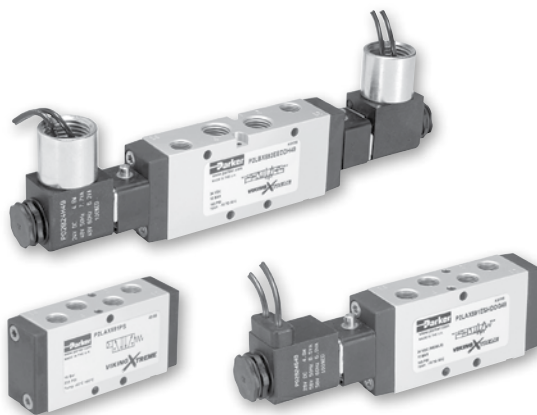
- 2.5 W to 7.3 watts
 - Conduit
 - Grommet
 - 22mm & 30mm 3-pin (DIN 43650)
- 12VDC to 240VAC W Option Available

Certification / approval

- IP65 Rated
- ATEX option available

Mobile applications

- Viking Xtreme tested to +5g shock and vibration
- Solenoids operate with wide voltage tolerance bands
- Corrosion resistant design



Operating information	
Operating pressure:	
Normal:	Vacuum to 145 PSIG (Vacuum to 10 bar)
Xtreme: (P2LAX & P2LBX)	Vacuum to 232 PSIG (Vacuum to 16 bar)
(P2LCX & P2LDX)	Vacuum to 174 PSIG (Vacuum to 12 bar)
Minimum: See chart	
Operating temperature:	
Normal:	14°F to 122°F (-10°C to 50°C)
Xtreme:	-40°F to 140°F (-40°C to 60°C)

Material specifications

Body	Anodized aluminum
End caps	Anodized aluminum
Coils	Thermoplastic
Fasteners	Stainless steel
Spool	Aluminum and nitrile rubber

Minimum operating pressure

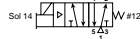
Valve type - Internal pilot	Minimum PSIG (bar)			
	P2LAX	P2LBX	P2LCX	P2LDX
Single solenoid - spring return	46 (3.2)	51 (3.5)	51 (3.5)	51 (3.5)
Single remote pilot - spring return	46 (3.2)	51 (3.5)	51 (3.5)	51 (3.5)
Double solenoid - 2-position	22 (1.5)	22 (1.5)	22 (1.5)	22 (1.5)
Double remote pilot - 2-position	22 (1.5)	22 (1.5)	22 (1.5)	22 (1.5)
Double solenoid - 3-position (APB, PC, CE)	51 (3.5)	51 (3.5)	51 (3.5)	51 (3.5)
Double remote pilot - 3-position (APB, PC, CE)	51 (3.5)	51 (3.5)	51 (3.5)	51 (3.5)

Most popular. For technical information see CD



N Series
 ADEX Series
 Viking Xtreme Series
 B Series
 D Inline Valve Products

Single Solenoid, 2-position, Extremel Operating Pressure / Temperature



Symbol	Solenoid	Port size	Cv	Valve type	Voltage	Part number
22mm DIN		1/8"	0.7 Cv	P2LAX	12VDC	P2LAX591ESHDDDB47
					24VAC	P2LAX591ESHDDDB48
		1/4"	1.3 Cv	P2LBX	12VDC	P2LBX592ESHDDDB47
					24VAC	P2LBX592ESHDDDB48
		3/8"	2.5 Cv	P2LCX	12VDC	P2LCX593ESHDDDB47
					24VAC	P2LCX593ESHDDDB48
1/2"	2.7 Cv	P2LDX	12VDC	P2LDX594ESHDDDB47		
			24VAC	P2LDX594ESHDDDB48		
18" Grommet		1/8"	0.7 Cv	P2LAX	12VDC	P2LAX591ESHDDG47
					24VAC	P2LAX591ESHDDG48
		1/4"	1.3 Cv	P2LBX	12VDC	P2LBX592ESHDDG47
					24VAC	P2LBX592ESHDDG48
		3/8"	2.5 Cv	P2LCX	12VDC	P2LCX593ESHDDG47
					24VAC	P2LCX593ESHDDG48
1/2"	2.7 Cv	P2LDX	12VDC	P2LDX594ESHDDG47		
			24VAC	P2LDX594ESHDDG48		

P2LAX 18" Grommet Shown

Double Solenoid, 2-position, Extremel Operating Pressure / Temperature



Symbol	Solenoid	Port size	Cv	Valve type	Voltage	Part number
22mm DIN		1/8"	0.7 Cv	P2LAX	12VDC	P2LAX591EEHDDDB47
					24VAC	P2LAX591EEHDDDB48
		1/4"	1.3 Cv	P2LBX	12VDC	P2LBX592EEHDDDB47
					24VAC	P2LBX592EEHDDDB48
		3/8"	2.5 Cv	P2LCX	12VDC	P2LCX593EEHDDDB47
					24VAC	P2LCX593EEHDDDB48
1/2"	2.7 Cv	P2LDX	12VDC	P2LDX594EEHDDDB47		
			24VAC	P2LDX594EEHDDDB48		
18" Grommet		1/8"	0.7 Cv	P2LAX	12VDC	P2LAX591EEHDDG47
					24VAC	P2LAX591EEHDDG48
		1/4"	1.3 Cv	P2LBX	12VDC	P2LBX592EEHDDG47
					24VAC	P2LBX592EEHDDG48
		3/8"	2.5 Cv	P2LCX	12VDC	P2LCX593EEHDDG47
					24VAC	P2LCX593EEHDDG48
1/2"	2.7 Cv	P2LDX	12VDC	P2LDX594EEHDDG47		
			24VAC	P2LDX594EEHDDG48		

P2LAX 18" Grommet Shown

Double Solenoid, 3-position All Ports Blocked, 3-position Center Exhaust, Extreme Operating Pressure / Temperature



Solenoid

Port size	Cv	Valve type	Voltage	Part number	
				All ports blocked	Center exhaust
1/8"	0.5 Cv	P2LAX	12VDC 24VAC	P2LAX691EEHDDG47	P2LAX891EEHDDG47
				P2LAX691EEHDDG48	P2LAX891EEHDDG48
1/4"	0.9 Cv	P2LBX	12VDC 24VAC	P2LBX692EEHDDG47	P2LBX892EEHDDG47
				P2LBX692EEHDDG48	P2LBX892EEHDDG48
3/8"	1.8 Cv	P2LCX	12VDC 24VAC	P2LCX693EEHDDG47	P2LCX893EEHDDG47
				P2LCX693EEHDDG48	P2LCX893EEHDDG48
1/2"	1.9 Cv	P2LDX	12VDC 24VAC	P2LDX694EEHDDG47	P2LDX894EEHDDG47
				P2LDX694EEHDDG48	P2LDX894EEHDDG48

P2LBX 18" Grommet Shown

N Series
ADEX Series
Viking Xtreme Series
B Series
D Inline Valve Products



Single Remote Pilot, 2-position, Extreme Operating Pressure / Temperature



P2LAX Shown

Symbol	Port size	Cv	Valve type	Part number
	1/8"	0.7 Cv	P2LAX	P2LAX591PS
	1/4"	1.3 Cv	P2LBX	P2LBX592PS
	3/8"	2.5 Cv	P2LCX	P2LCX593PS
	1/2"	2.7 Cv	P2LDX	P2LDX594PS

Double Remote Pilot, 2-position, Extreme Operating Pressure / Temperature



P2LBX Shown

Symbol	Port size	Cv	Valve type	Part number
	1/8"	0.7 Cv	P2LAX	P2LAX591PP
	1/4"	1.3 Cv	P2LBX	P2LBX592PP
	3/8"	2.5 Cv	P2LCX	P2LCX593PP
	1/2"	2.7 Cv	P2LDX	P2LDX594PP

Double Remote Pilot, 3-position All Ports Blocked, 3-position Center Exhaust, Extreme Operating Pressure / Temperature

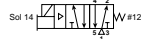


P2LBX Shown

Port size	Cv	Valve type	Part number	
			All ports blocked	Center exhaust
1/8"	0.5 Cv	P2LAX	P2LAX691PP	P2LAX891PP
1/4"	0.9 Cv	P2LBX	P2LBX692PP	P2LBX892PP
3/8"	1.8 Cv	P2LCX	P2LCX693PP	P2LCX893PP
1/2"	1.9 Cv	P2LDX	P2LDX694PP	P2LDX894PP

- N Series
- ADEX Series
- Viking Xtreme Series
- B Series
- D Inline Valve Products

Single Solenoid, 2-position, Normal Operating Pressure / Temperature



Symbol	Solenoid	Port size	Cv	Valve type	Voltage	Part number
	22mm DIN	1/8"	0.7 Cv	P2LAX	24VDC	P2LAX591ESNDDDB49
					120VAC	P2LAX591ESNDDB53
		1/4"	1.3 Cv	P2LBX	24VDC	P2LBX592ESNDDDB49
					120VAC	P2LBX592ESNDDB53
		3/8"	2.5 Cv	P2LCX	24VDC	P2LCX593ESNDDDB49
					120VAC	P2LCX593ESNDDB53
	18" Grommet	1/2"	2.7 Cv	P2LDX	24VDC	P2LDX594ESNDDDB49
					120VAC	P2LDX594ESNDDB53
		1/8"	0.7 Cv	P2LAX	24VDC	P2LAX591ESNDDG49
					120VAC	P2LAX591ESNDDG53
1/4"	1.3 Cv	P2LBX	24VDC	P2LBX592ESNDDG49		
			120VAC	P2LBX592ESNDDG53		
3/8"	2.5 Cv	P2LCX	24VDC	P2LCX593ESNDDG49		
			120VAC	P2LCX593ESNDDG53		
1/2"	2.7 Cv	P2LDX	24VDC	P2LDX594ESNDDG49		
			120VAC	P2LDX594ESNDDG53		

P2LAX 18" Grommet Shown

Double Solenoid, 2-position, Normal Operating Pressure / Temperature



Symbol	Solenoid	Port size	Cv	Valve type	Voltage	Part number
	22mm DIN	1/8"	0.7 Cv	P2LAX	24VDC	P2LAX591EENDDDB49
					120VAC	P2LAX591EENDDB53
		1/4"	1.3 Cv	P2LBX	24VDC	P2LBX592EENDDDB49
					120VAC	P2LBX592EENDDB53
		3/8"	2.5 Cv	P2LCX	24VDC	P2LCX593EENDDDB49
					120VAC	P2LCX593EENDDB53
	18" Grommet	1/2"	2.7 Cv	P2LDX	24VDC	P2LDX594EENDDDB49
					120VAC	P2LDX594EENDDB53
		1/8"	0.7 Cv	P2LAX	24VDC	P2LAX591EENDDG49
					120VAC	P2LAX591EENDDG53
1/4"	1.3 Cv	P2LBX	24VDC	P2LBX592EENDDG49		
			120VAC	P2LBX592EENDDG53		
3/8"	2.5 Cv	P2LCX	24VDC	P2LCX593EENDDG49		
			120VAC	P2LCX593EENDDG53		
1/2"	2.7 Cv	P2LDX	24VDC	P2LDX594EENDDG49		
			120VAC	P2LDX594EENDDG53		

P2LAX 18" Grommet Shown

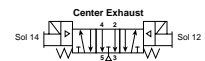
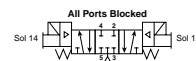
Double Solenoid, 3-position All Ports Blocked, 3-position Center Exhaust, Normal Operating Pressure / Temperature



Solenoid

Port size	Cv	Valve type	Voltage	Part number		
				All ports blocked	Center exhaust	
18" Grommet	1/8"	0.5 Cv	P2LAX	24VDC 120VAC	P2LAX691EENDDG49	P2LAX891EENDDG49
					P2LAX691EENDDG53	P2LAX891EENDDG53
	1/4"	0.9 Cv	P2LBX	24VDC 120VAC	P2LBX692EENDDG49	P2LBX892EENDDG49
					P2LBX692EENDDG53	P2LBX892EENDDG53
	3/8"	1.8 Cv	P2LCX	24VDC 120VAC	P2LCX693EENDDG49	P2LCX893EENDDG49
					P2LCX693EENDDG53	P2LCX893EENDDG53
1/2"	1.9 Cv	P2LDX	24VDC 120VAC	P2LDX694EENDDG49	P2LDX894EENDDG49	
				P2LDX694EENDDG53	P2LDX894EENDDG53	

P2LBX 18" Grommet Shown



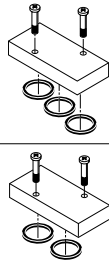
IEM Bar Manifolds



Valve type	## – Stations	Manifold only	Manifold assembly
P2LAX	02 to 12	P2LAXMAXN##NP	AAP2LAXMAXN##NP
P2LBX	02 to 12	P2LBXMAXN##NP	AAP2LBXMAXN##NP
P2LCX	02 to 12	P2LCXMAXN##NP	AAP2LCXMAXN##NP

- Utilizes Inline mount Viking Xtreme Series valves.
 - Kits include:** (1) Manifold, (2) Valve Hold Down Bolts per Station, (3) O-rings per Station.
- Note:** All IEM bar manifolds are 4-way only with internal pilot air supply. External pilot supply thru a common "X" port not available.

Blanking Plate



Type		Kit number
P2LAX	4-way	P2LAXK20P
P2LBX	4-way	P2LBXK20P
P2LCX	3 & 4 way	P2LCXK20P
P2LAX	3-way	P2LAXK30P
P2LBX	3-way	P2LBXK30P

Kit includes: (1) Plate, (2) Screws, (3) O-rings

Manifold Bolts

Type	Qty.	Kit number
P2LAX	12	P2LAXK87P
P2LBX	12	P2LBXK87P
P2LCX	12	P2LCXK87P

Manifold O-rings

Type	Qty.	Kit number
P2LAX	30	P2LAXK84P
P2LBX	18	P2LBXK84P
P2LCX	12	P2LCXK84P

**30mm Square 3-Pin – ISO 4400, DIN 43650A
 (Use with Enclosure "A")**

Description	Connector with 6' (2m) cord	Connector
Unlighted	PS2028JCP	PS2028BP
Light – 6-48V. 50/60Hz. 6-48VDC	PS2032J79CP*	PS203279BP
Light – 120V/60Hz	PS2032J83CP*	PS203283BP
Light – 240V/60Hz	N/A	PS203283BP

- * LED with surge suppression.
Note: Max ø6.5mm cable size required for connector w/o 6' (2m) cord. IP65 rated when properly installed.
Engineering data:
 Conductors: 2 poles plus ground; cable range (connector only): 8 to 10mm (0.31 To 0.39 Inch); contact spacing: 18mm

**22mm Rectangular 3-Pin – Type B Industrial
 (Use with Enclosure "B")**

Description	Connector with 6' (2m) cord	Connector
Unlighted	PS2429JBP	PS2429BP
Light – 24V/60Hz. 24VDC	PS2430J79BP*	PS243079BP
Light – 120V/60Hz	PS2430J83BP*	PS243083BP
Light – 240V/60Hz	N/A	PS243087BP

- * LED with surge suppression.
Note: Max ø6.5mm cable size required for connector w/o 6' (2m) cord. IP65 rated when properly installed.
Engineering Data:
 Conductors: 2 Poles Plus Ground; Cable Range (Connector Only): 6 to 8mm (0.24 to 0.31 Inch); Contact Spacing: 11mm

Exhaust Mufflers

Pipe thread	Part number
M5	P6M-PAC5
1/8" NPT	EM12
1/4" NPT	EM25
3/8" NPT	EM37
1/2" NPT	EM50

P6M - Plastic; EM - Sintered Bronze

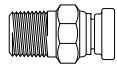
Plastic Silencers



Thread size	Part number	
	NPT	BSPT
M5	AS-5	
1/8"	ASN-6	AS-6
1/4"	ASN-8	AS-8
3/8"	ASN-10	AS-10
1/2"	ASN-15	AS-15

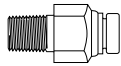


68PM Male Connector



Tube Size	Pipe thread (NPTF)	Part number
1/8	1/16	68PM-2-1
1/8	1/8	68PM-2-2
5/32	1/16	68PM-5/32-1
5/32	1/8	68PM-5/32-2
5/32	1/4	68PM-5/32-4
3/16	1/16	68PM-3-1
3/16	1/8	68PM-3-2
3/16	1/4	68PM-3-4

68PMT Male Connector



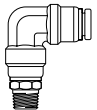
Tube size	Pipe thread (NPTF)	Part number
1/4	1/8	68PMT-4-2
1/4	1/4	68PMT-4-4
1/4	3/8	68PMT-4-6
3/8	1/8	68PMT-6-2
3/8	1/4	68PMT-6-4
3/8	3/8	68PMT-6-6
3/8	1/2	68PMT-6-8
1/2	1/4	68PMT-8-4
1/2	3/8	68PMT-8-6
1/2	1/2	68PMT-8-8
5/8	3/8	68PMT-10-6
5/8	1/2	68PMT-10-8
3/4	1/2	68PMT-12-8

169PMNS Male Elbow Non-Swivel 90°



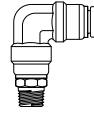
Tube size	Pipe thread (NPTF)	Part number
1/8	1/8	169PMNS-2-2
5/32	1/8	169PMNS-5/32-2
3/16	1/8	169PMNS-3-2
3/16	1/4	169PMNS-3-4

169PMT Male Elbow Swivel 90°



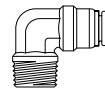
Tube Size	Pipe thread (NPTF)	Part number
1/4	1/8	169PMT-4-2
1/4	1/4	169PMT-4-4
1/4	3/8	169PMT-4-6
3/8	1/8	169PMT-6-2
3/8	1/4	169PMT-6-4
3/8	3/8	169PMT-6-6
3/8	1/2	169PMT-6-8
1/2	1/4	169PMT-8-4
1/2	3/8	169PMT-8-6
1/2	1/2	169PMT-8-8
5/8	3/8	169PMT-10-6
5/8	1/2	169PMT-10-8

169PMTL Male Elbow Long Non-Swivel 90°



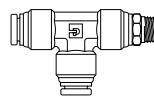
Tube Size	Pipe thread (NPTF)	Part number
3/8	1/4	169PMTL-6-4
3/8	3/8	169PMTL-6-6
3/8	1/2	169PMTL-6-8
1/2	1/2	169PMTL-8-8
5/8	1/2	169PMTL-10-8

169PMTNS Male Elbow Non-Swivel 90°



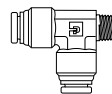
Tube size	Pipe thread (NPTF)	Part number
1/4	1/8	169PMTNS-4-2
1/4	1/4	169PMTNS-4-4
1/4	3/8	169PMTNS-4-6
3/8	1/8	169PMTNS-6-2
3/8	1/4	169PMTNS-6-4
3/8	3/8	169PMTNS-6-6
3/8	1/2	169PMTNS-6-8
1/2	1/4	169PMTNS-8-4
1/2	3/8	169PMTNS-8-6
1/2	1/2	169PMTNS-8-8
5/8	3/8	169PMTNS-10-6
5/8	1/2	169PMTNS-10-8
3/4	1/2	169PMTNS-12-8

171PMT Male Run Tee Swivel



Tube Size	Pipe thread (NPTF)	Part number
1/4	1/8	171PMT-4-2
1/4	1/4	171PMT-4-4
1/4	3/8	171PMT-4-6
3/8	1/4	171PMT-6-4
3/8	3/8	171PMT-6-6
1/2	1/4	171PMT-8-4
1/2	3/8	171PMT-8-6
1/2	1/2	171PMT-8-8

171PMTNS Male Run Tee Non-Swivel



Tube 1 Size	Tube 2 Size	Part number
1/4	1/4	171PMTNS-4-4
1/4	3/8	171PMTNS-4-6-4
3/8	3/8	171PMTNS-6-4
3/8	1/4	171PMTNS-6-4-4
3/8	1/4	171PMTNS-6-4-6
1/2	3/8	171PMTNS-6-6
1/2	3/8	171PMTNS-6-8
1/2	1/2	171PMTNS-8-4

N Series

ADEX Series

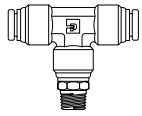
Viking Xtreme Series

B Series

D

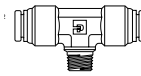
Inline Valve Products

172PMT Male Branch Tee Swivel



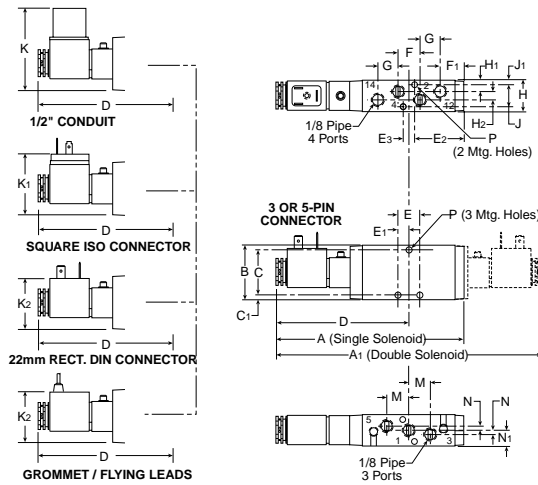
Tube Size	Pipe thread (NPTF)	Part number
1/4	1/8	172PMT-4-2
1/4	1/4	172PMT-4-4
3/8	1/8	172PMT-6-2
3/8	1/4	172PMT-6-4
3/8	3/8	172PMT-6-6
1/2	1/4	172PMT-8-4
1/2	3/8	172PMT-8-6
1/2	1/2	172PMT-8-8

172PMTNS Male Branch Tee Non-Swivel



Tube 1 Size	Tube 2 Size	Pipe thread (NPTF)	Part number
1/4	1/4	1/8	172PMTNS-4-2
3/8	3/8	1/4	172PMTNS-6-4
3/8	1/4	1/4	172PMTNS-6-4-4
3/8	3/8	3/8	172PMTNS-6-6
3/8	3/8	1/2	172PMTNS-6-8
1/2	1/2	3/8	172PMTNS-8-6
1/2	3/8	1/2	172PMTNS-8-6-8
1/2	1/2	1/2	172PMTNS-8-8

P2LAX Single & Double Operators – Solenoid

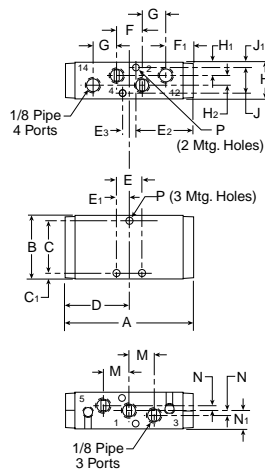


P2LAX (Solenoid)

A	A₁	B	C	C₁
5.31 (135)	7.72 (196)	1.57 (40)	1.30 (33)	.14 (3.5)
D	E	E₁	E₂	E₃
3.86 (98)	.63 (16)	.31 (8)	1.42 (36)	.33 (8.5)
F	G	H	H₁	H₂
.63 (16)	.59 (15)	.87 (22)	.31 (8)	.24 (6)
J	J₁	K	K₁	K₂
.63 (16)	.12 (3)	2.36 (60)	1.61 (41)	1.50 (38)
M	N	N₁	P	
.63 (16)	.12 (3)	.43 (11)	∅ .16 ∅ (4.1)	

Inches (mm)

P2LAX Single & Double Operators – Remote Pilot

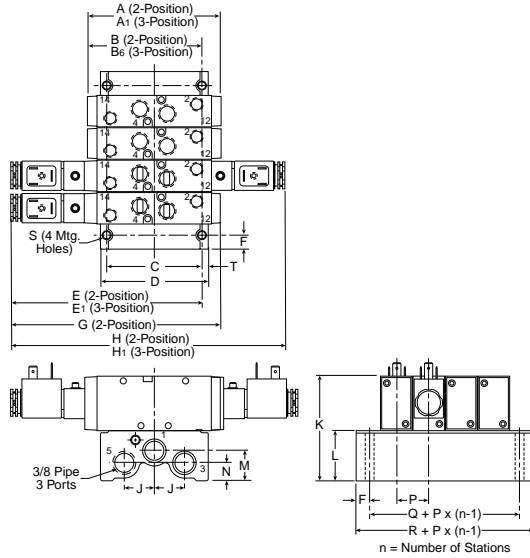


P2LAX (Remote)

A	B	C	C₁	D
3.19 (81)	1.57 (40)	1.30 (33)	.14 (3.5)	1.57 (40)
E	E₁	E₂	E₃	E₃
1.47 (16)	.31 (8)	1.42 (36)	.33 (8.5)	.33 (8.5)
F	F₁	G	H	H₁
.63 (16)	.67 (17)	.59 (15)	.87 (22)	.31 (8)
H₂	J	J₁	M	N
.24 (6)	.63 (16)	.12 (3)	.63 (16)	.12 (3)
N₁	P			
.43 (11)	∅ .16 ∅ (4.1)			

Inches (mm)

P2LAX Single & Double Operators – IEM Aluminum Bar Manifold

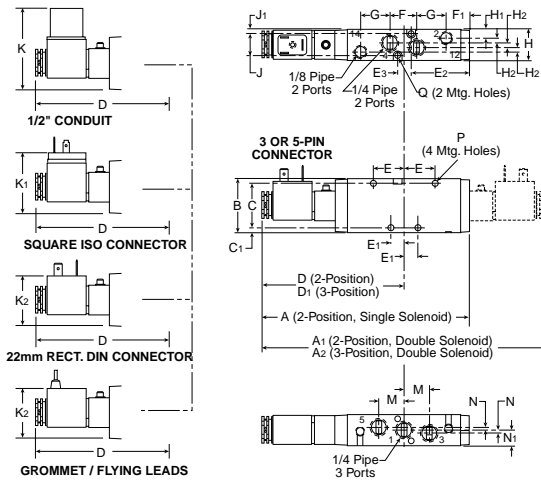


IEM Aluminum Bar Manifold

A	B	C	D	E
3.19 (81)	2.95 (75)	2.76 (70)	3.12 (79)	5.24 (133)
F	G	H	J	K
41 (10.5)	5.31 (135)	7.72 (196)	.87 (22)	3.11 (79)
L	N	P	Q	R
1.54 (39)	.52 (13.2)	.93 (23.5)	1.56 (39.5)	2.36 (60)
S	T			
Ø .22	.18			
Ø (5.5)	(4.6)			

Inches (mm)

P2LBX Single & Double Operators – Solenoid

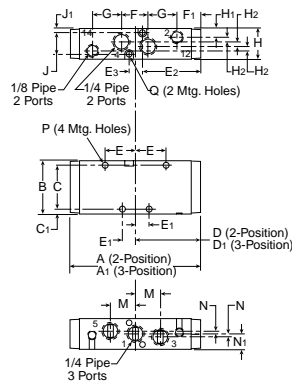


P2LBX (Solenoid)

A	A ₁	A ₂	B	C
6.14 (156)	8.39 (213)	9.06 (230)	1.57 (40)	1.26 (32)
C ₁	D	D ₁	E	E ₁
.16 (4)	4.21 (107)	4.55 (116)	.91 (23)	.39 (10)
E ₂	E ₃	F	F ₁	G
1.73 (44)	.39 (10)	.79 (20)	.67 (17)	.87 (22)
H	H ₁	H ₂	J	J ₁
.87 (22)	.26 (6.6)	.12 (3)	.65 (16.5)	.11 (2.8)
K	K ₁	K ₂	M	N
2.36 (60)	1.61 (41)	1.50 (38)	.79 (20)	.08 (2)
N ₁	P	Q		
.43 (11)	Ø .17 (4.3)	Ø .12 (3.1)		

Inches (mm)

P2LBX Single & Double Operators – Remote Pilot



P2LBX (Remote)

A	A ₁	B	C	C ₁
3.95 (100)	4.61 (117)	1.57 (40)	1.26 (32)	.16 (4)
D	D ₁	E	E ₁	E ₂
1.93 (49)	2.28 (58)	.91 (23)	.39 (10)	1.73 (44)
E ₃	F	F ₁	G	H
.39 (10)	.79 (20)	.67 (17)	.87 (22)	.87 (22)
H ₁	H ₂	J	J ₁	K
.26 (6.6)	.12 (3)	.65 (16.5)	.11 (2.8)	2.90 (74)
M	N	N ₁	P	
.79 (20)	.08 (2)	.43 (11)	Ø .17 (4.3)	

Inches (mm)



N Series

ADEX Series

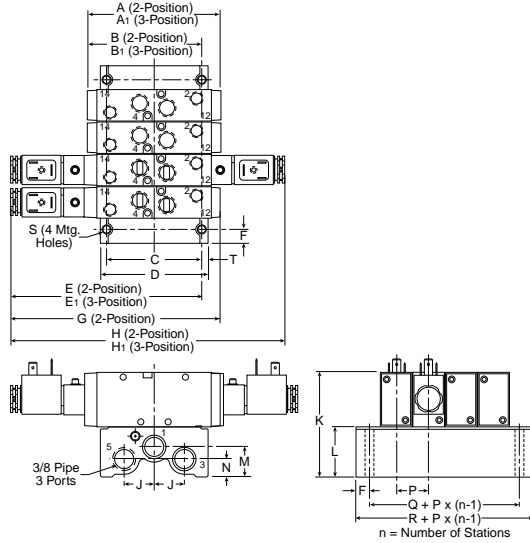
Viking Xtreme Series

B Series

D

Inline Valve Products

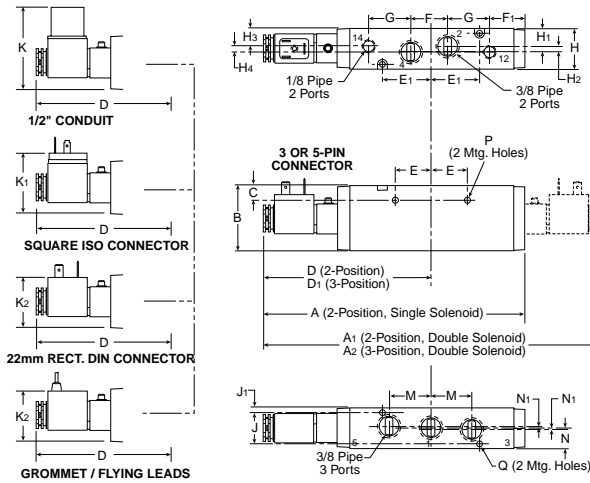
P2LBX Single & Double Operators – IEM Aluminum Bar Manifold



IEM Aluminum Bar Manifold

A	A1	B	B1	C
3.95 (100)	4.61 (117)	3.42 (87)	3.76 (96)	2.76 (70)
D	E	E1	F	G
3.12 (79)	5.47 (139)	5.81 (148)	.40 (10.2)	6.10 (155)
H	H1	J	K	L
8.39 (213)	9.06 (230)	.87 (22)	3.11 (79)	1.47 (37)
M	N	P	Q	R
.87 (22)	.52 (13.2)	.93 (23.5)	1.56 (39.5)	2.36 (60)
S	T			
Ø .22 Ø (5.5)	.18 (4.6)			
Inches (mm)				

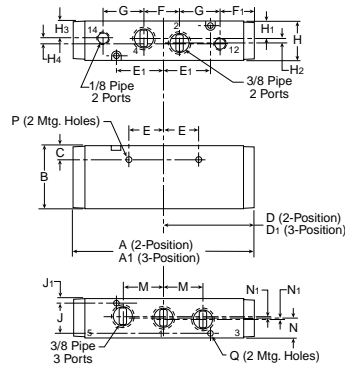
P2LCX Single & Double Operators – Solenoid



P2LCX (Solenoid)

A	A1	A2	B	C
7.64 (194)	9.84 (250)	10.71 (272)	1.89 (48)	.44 (11.2)
D	D1	E	E1	F
4.92 (125)	5.35 (136)	1.04 (26.5)	1.39 (35.4)	1.06 (27)
F1	G	H	H1	H2
1.02 (26)	1.22 (31)	1.18 (30)	.53 (13.5)	.12 (3)
H3	H4	J	J1	K
.51 (13)	.16 (4)	.91 (23)	.14 (3.5)	2.52 (64)
K1	K2	M	N	N1
1.77 (45)	1.65 (42)	1.18 (30)	.59 (15)	.04 (1)
P	Q			
Ø .27 Ø (6.9)	Ø .17 Ø (4.4)			
Inches (mm)				

Single & Double Operators – Remote Pilot



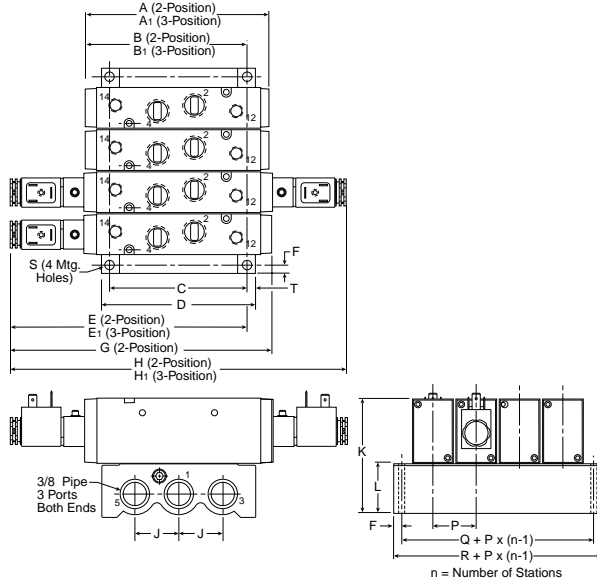
P2LCX (Remote)

A	A1	B	C	D
5.51 (140)	6.38 (162)	1.89 (48)	.44 (11.2)	2.76 (70)
D1	E	E1	F	F1
3.18 (81)	1.04 (26.5)	1.39 (35.4)	1.06 (27)	1.02 (26)
G	H	H1	H2	H3
1.22 (31)	1.18 (30)	.53 (13.5)	.12 (3)	.51 (13)
H4	J	J1	K	M
.16 (4)	.91 (23)	.14 (3.5)	2.47 (62.8)	1.18 (30)
N	N1	P	Q	
.59 (15)	.04 (1)	Ø .27 Ø (6.9)	Ø .17 Ø (4.4)	
Inches (mm)				

N Series
 ADEX Series
 Viking Xtreme Series
 B Series
 D Inline Valve Products



P2LCX Single & Double Operators – IEM Aluminum Bar Manifold

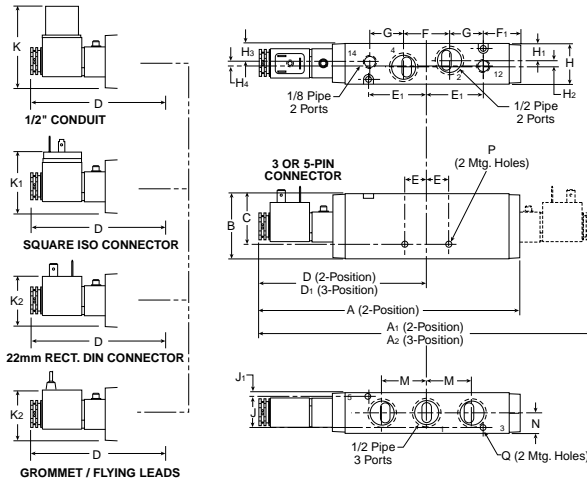


IEM Aluminum Bar Manifold

A	A ₁	B	B ₁	C
5.51 (140)	6.38 (162)	4.72 (120)	5.16 (131)	3.94 (100)
D	E	E ₁	F	G
4.41 (112)	6.89 (170)	7.13 (181)	.24 (6)	7.68 (195)
H	H ₁	J	K	L
9.84 (250)	10.71 (272)	1.26 (32)	3.43 (87)	1.54 (39)
P	R	S	T	
1.24 (31.5)	2.24 (57)	Ø .26 (6.5)	.24 (6)	

Inches (mm)

P2LDX Single & Double Operators – Solenoid

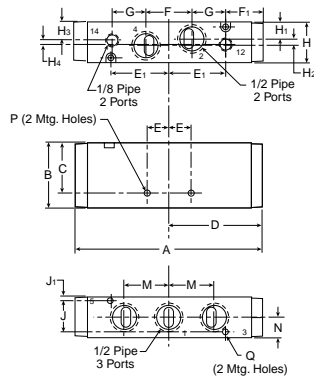


P2LDX (Solenoid)

A	A ₁	A ₂	B	C
7.64 (194)	9.84 (250)	10.70 (273)	1.89 (48)	1.59 (40.5)
D	D ₁	E	E ₁	F
4.92 (125)	5.83 (148)	.67 (17)	1.65 (42)	1.34 (34)
F ₁	G	H	H ₁	H ₂
1.08 (27.5)	.98 (25)	1.18 (30)	.49 (12.5)	.20 (5)
H ₃	H ₄	J	J ₁	K
.51 (13)	.16 (4)	.91 (23)	.14 (3.5)	2.52 (64)
K ₁	K ₂	M	N	P
1.77 (45)	1.65 (42)	1.29 (32.7)	.59 (15)	Ø .26 (6.6)

Q
 Ø .17
 Ø (4.4)
 Inches (mm)

P2LDX Single & Double Operators – Remote Pilot



P2LDX (Remote)

A	B	C	D	E
5.47 (139)	1.89 (48)	1.59 (40.5)	2.63 (67)	.67 (17)
E ₁	F	F ₁	G	H
1.65 (42)	1.34 (34)	1.08 (27.5)	.98 (25)	1.18 (30)
H ₁	H ₂	H ₃	H ₄	J
.49 (12.5)	.20 (5)	.51 (13)	.16 (4)	.91 (23)
J ₁	P	M	N	Q
.14 (3.5)	Ø .26 (6.6)	1.29 (32.7)	.59 (15)	Ø .17 (4.4)

Inches (mm)



N Series

ADEX Series

Viking Xtreme Series

B Series

D

Inline Valve Products